



COMMUNITY UPDATE
August 2018

SHEAFFE ST STAGE 2 UPGRADE

From the Project Director

“Firstly, and on behalf Cloncurry Shire Council and my management team, I am extremely proud to announce that construction works along Sheaffe Street, Scarr Street and Daintree Street are progressing towards our major milestone. A milestone that will see all works completed by the end of September.

The next 3 weeks will see road closures in place along Sheaffe Street, Scarr Street and Daintree Street to facilitate new pavement works, asphalt works and landscaping works. These closures will ensure our workers, the wider community and visitors to our town remain safe while large construction equipment is in operation.

We again request you remain patience while roadworks are being completed, and further support the project team as we progress towards providing the community new and improved infrastructure”.

Sincere Thanks

Glen Lamont



WORK PROGRESSION/ CONSTRUCTION UPGRADE	COMMUNITY BLOG
<p>ABOUT THE WORKS:</p> <ul style="list-style-type: none"> • The final stages of construction will involve Pavement rehabilitation works. These works will include in-situ stabilisation of the existing pavement, bitumen sealing and asphalt works. • Pavement rehabilitation works will take approximately 14 working days to complete. 	<p>Additional information for the wider community:</p> <ol style="list-style-type: none"> 1. Landscaping works – Scheduled week commencing 3rd September. 2. Asphalt Pavement – Scheduled to commence 18th September. 3. All permanent works along Sheaffe Street are scheduled to be completed late September.

MORE PROJECT INFORMATION:

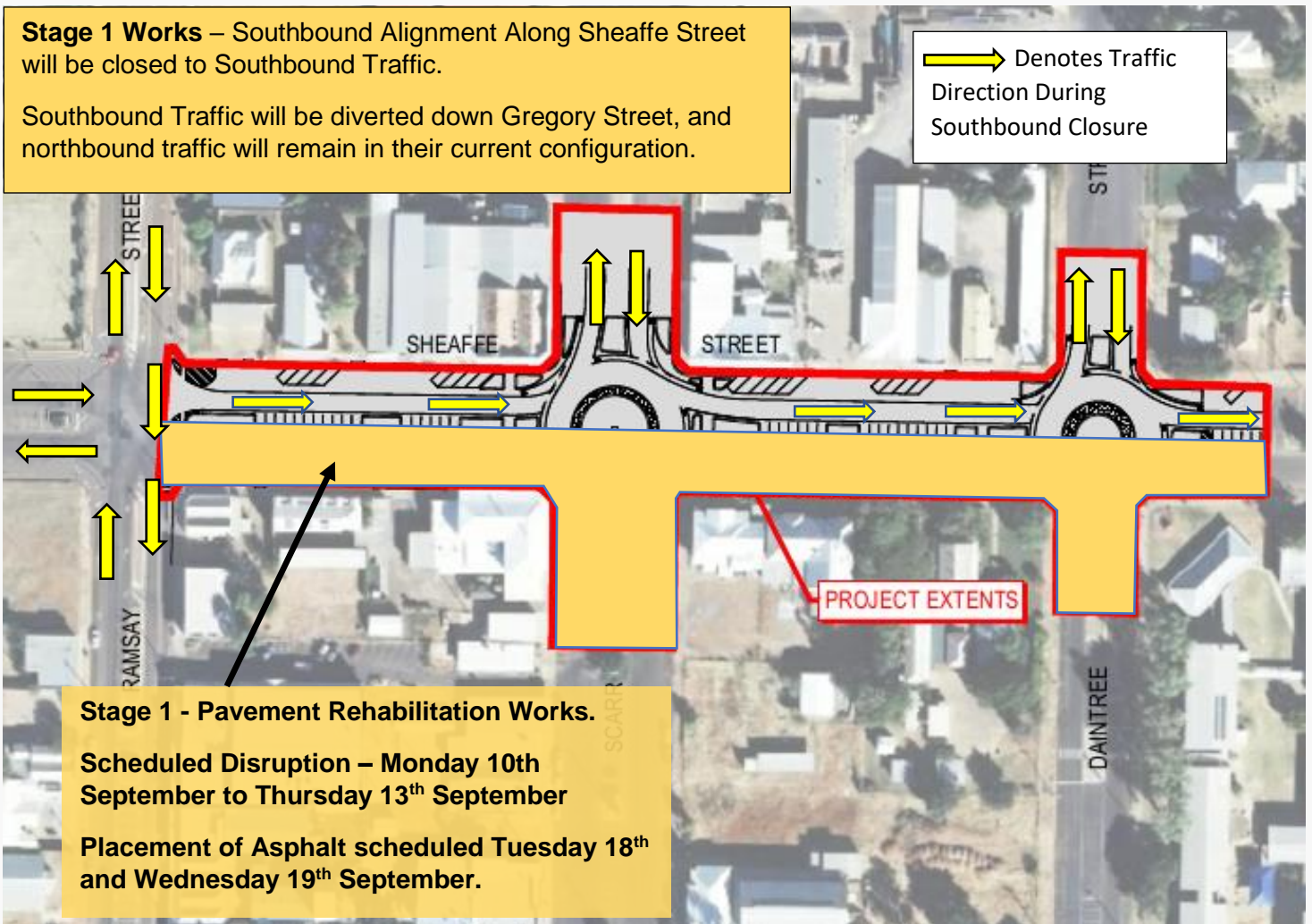
For any information relating to the works being constructed at Sheaffe Street, please contact our community hotline: 0481755257.

SHEAFFE ST STAGE 2 UPGRADE

Stage 1 Works – Southbound Alignment Along Sheaffe Street will be closed to Southbound Traffic.

Southbound Traffic will be diverted down Gregory Street, and northbound traffic will remain in their current configuration.

→ Denotes Traffic Direction During Southbound Closure



Stage 1 - Pavement Rehabilitation Works.

Scheduled Disruption – Monday 10th September to Thursday 13th September

Placement of Asphalt scheduled Tuesday 18th and Wednesday 19th September.

FIGURE 1 – PAVEMENT REHABILITATION WORKS SOUTHBOUND ALIGNMENT

SHEAFFE ST STAGE 2 UPGRADE

Stage 2 Works – Northbound Alignment Along Sheaffe Street will be closed to Northbound Traffic.

Southbound Traffic will remain in their current configuration.

→ Denotes Traffic Direction During Southbound Closure

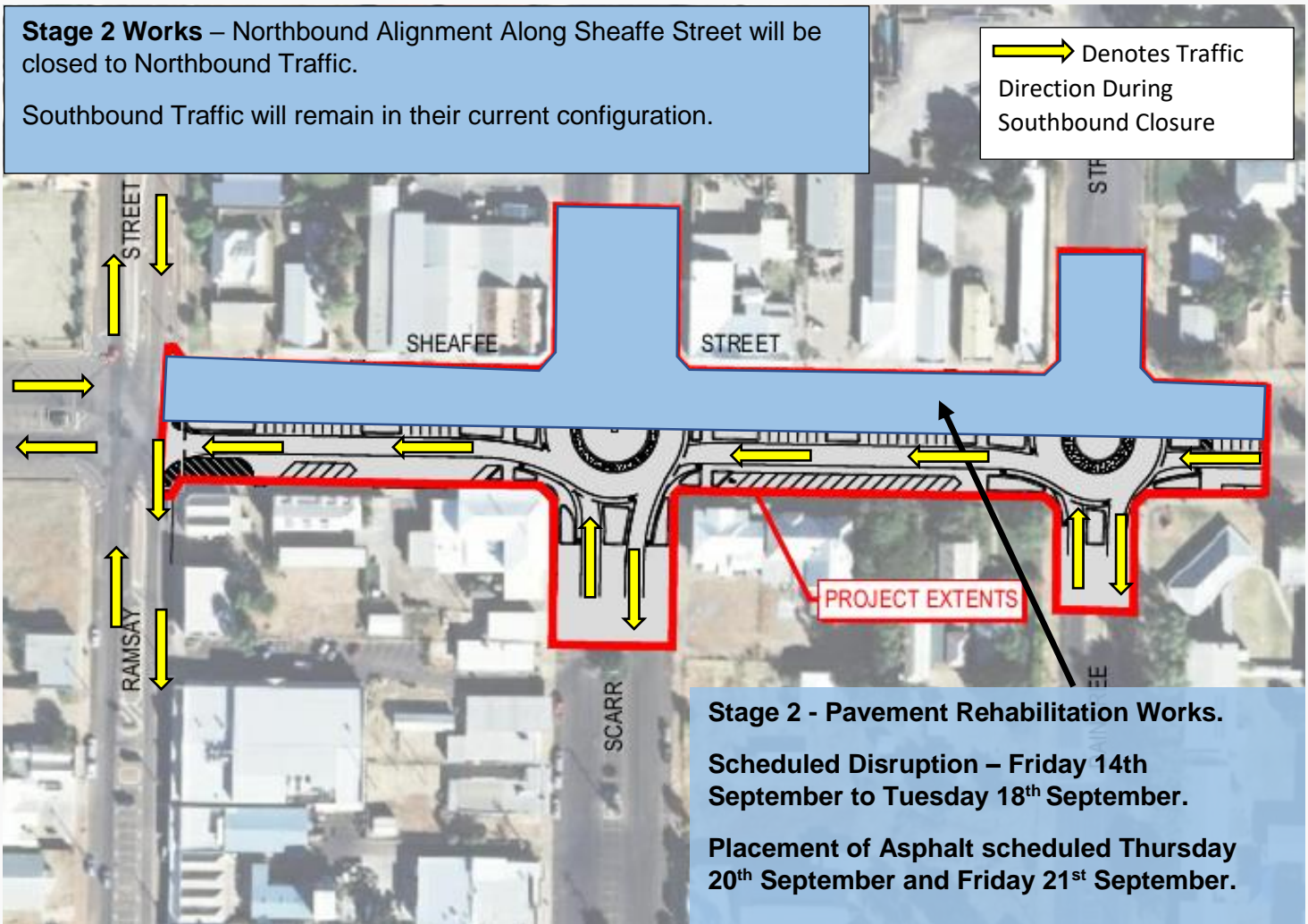


FIGURE 2 – PAVEMENT REHABILITATION WORKS NORTHBOUND ALIGNMENT

ALL INFORMATION CONTAINED IN THIS COMMUNICATION IS ACCURATE AT THE TIME OF DISTRIBUTION, HOWEVER WORKS AND DATES ARE SUBJECT TO CHANGE DUE TO CIRCUMSTANCES OUTSIDE LAMONT GROUP'S CONTROL.